

# Resilience - Resistance



Remixing - Reinventing the Right to the City

Judith Ryser CORP conference 14-16 May 2012



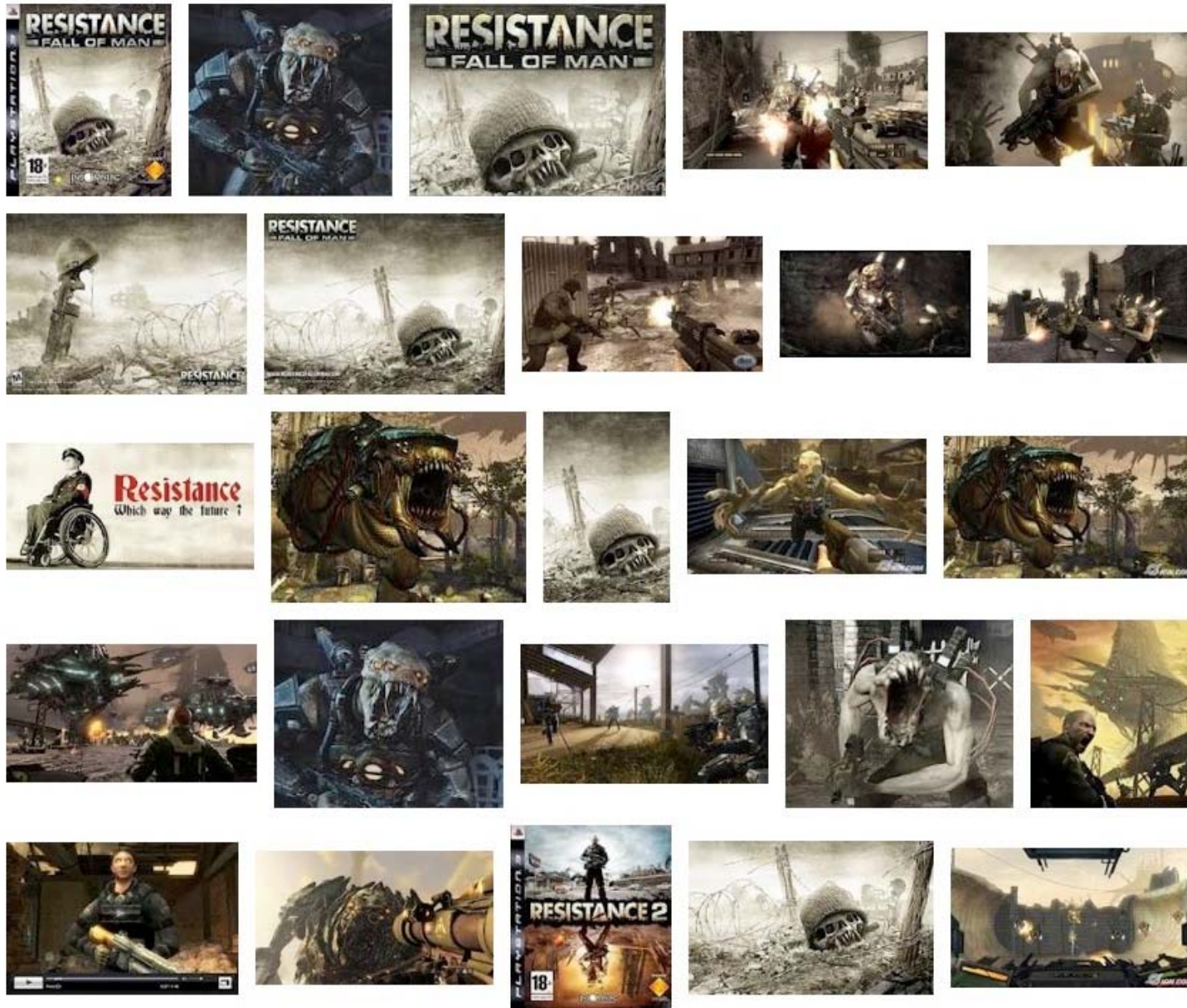
# Resilience

# Meaning?



# Resistance

## Meaning?





# Resilience ?

in reality



nature <> humankind



# Resistance ?

# in reality



Norman Foster's Crystal Island, Moscow, rendering. Photo: Foster and Partners



development industry <> people's claims



# Assumption

## Re-mixing makes cities more sustainable



Mixity: past golden age?

Mixity: present fractured

Mixity: future sustainable?



# Sustainability

through passive resistance/ resilience?



wasteful nature <> resourceful people

# Sustainability

through active resilience / resistance?



inner strength



outward emotion



# Resistance or Resilience

of cities





# Resilience and Resistance

in cities





# Crisis -> (Austerity) -> Protest

resistance in London



peace camps



student protests



riots  
2011



occupy  
lsx



# Peace camps

peaceful, resilient until they achieve results

## Effects

short term - positive:

raise awareness and trigger debate

short term - negative:

are discredited, criminalised, evacuated

long term - positive:

achieve results (e.g. anti apartheid SA)

long term - negative:

restrictions to demonstrate and congregate,  
no photography, more surveillance





# Student protests

peaceful or violent, short lived, IT smart

## Effects

short term - positive:

intense media coverage, sympathy

short term - negative:

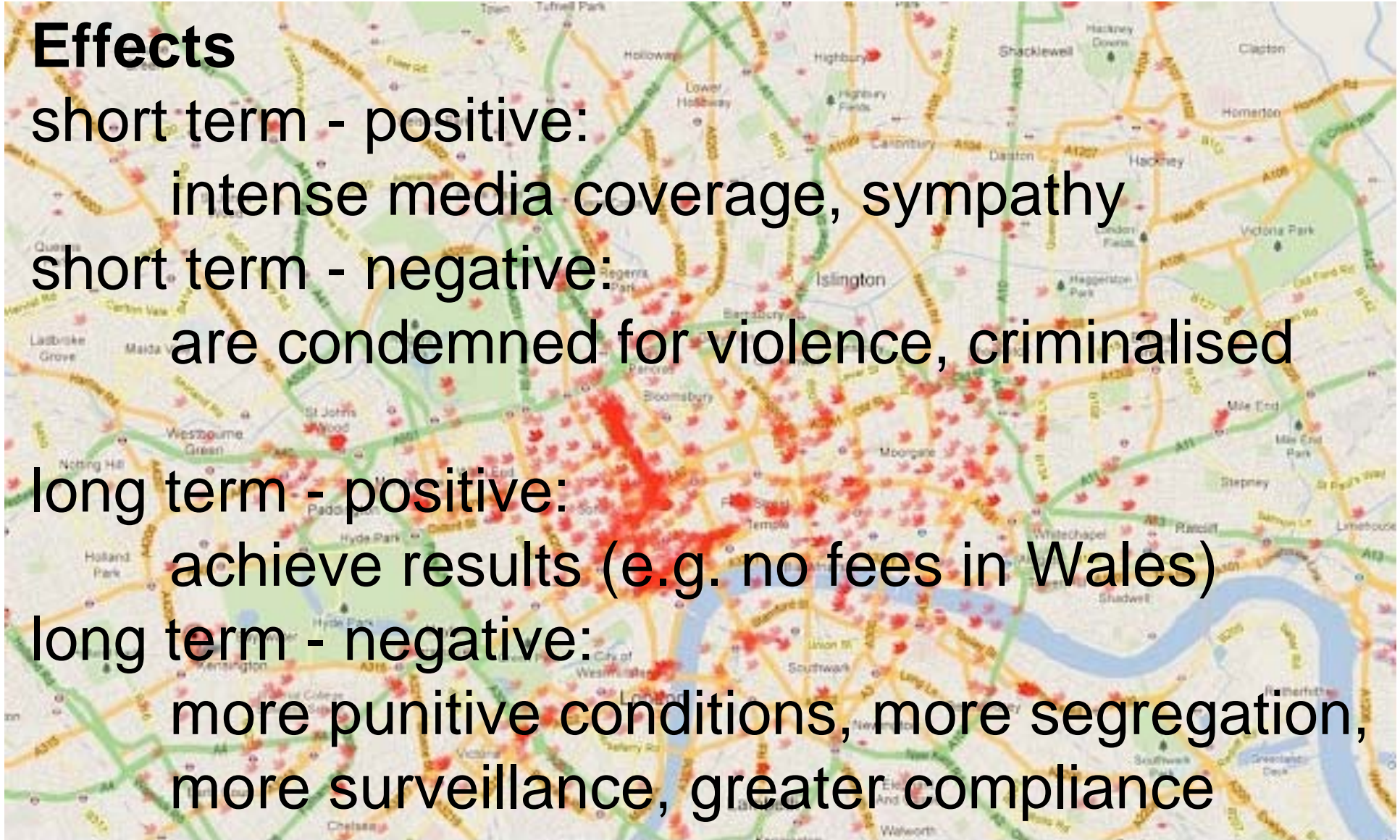
are condemned for violence, criminalised

long term - positive:

achieve results (e.g. no fees in Wales)

long term - negative:

more punitive conditions, more segregation,  
more surveillance, greater compliance





# Summer riots

violent, opportunistic, short lived, IT smart

## Effects

short term - positive:

media coverage, expose social polarisation

short term - negative:

anger, criminalisation, harsh punishments

long term - positive:

raise debate on uneven economic hardship

long term - negative:

more punitive conditions, more exclusion,  
more surveillance, less tolerance





# Occupy Isx

peaceful, alternative, resilient, inclusive

## Effects

short term - positive:

media coverage, expose greed & hardship

short term - negative:

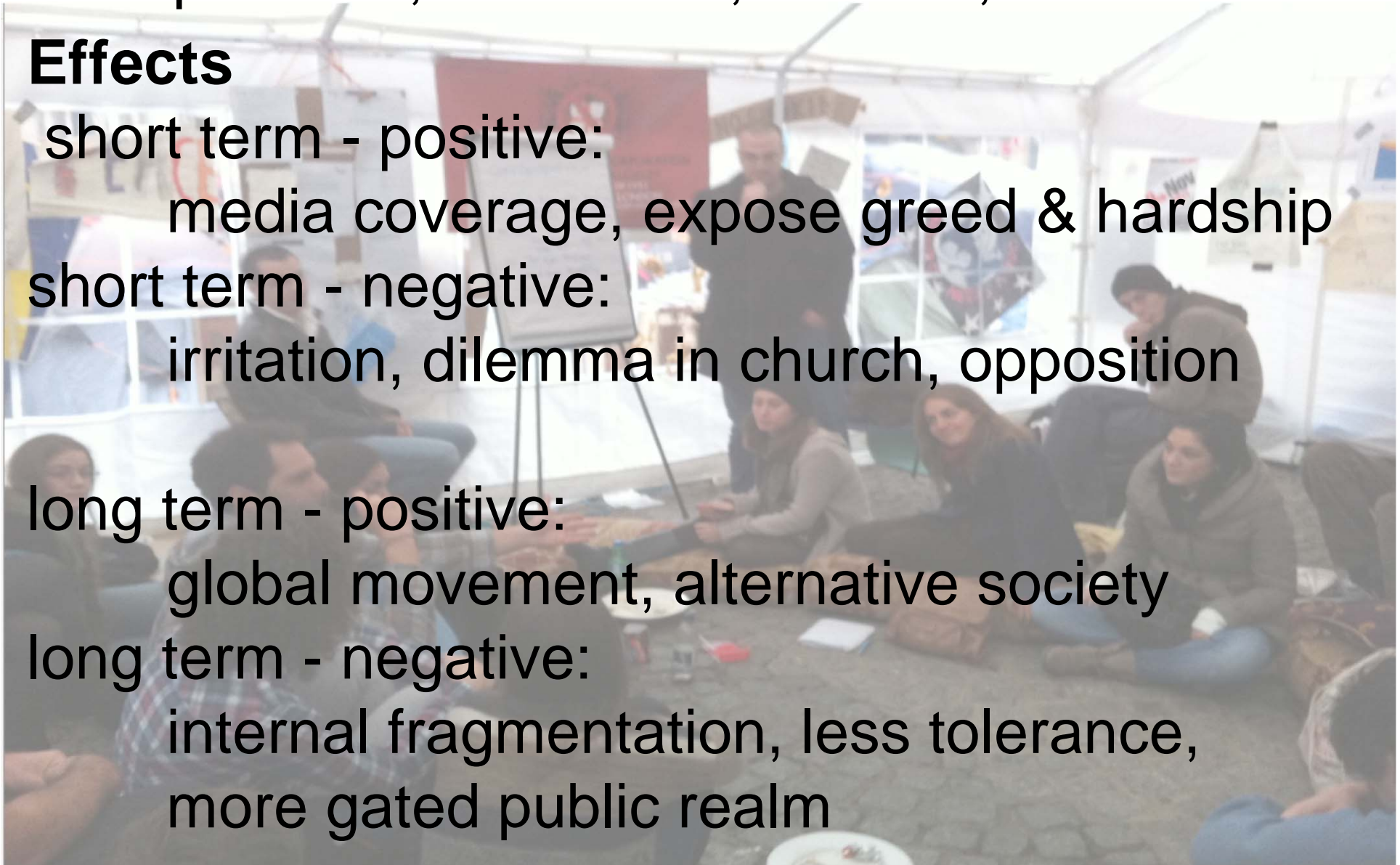
irritation, dilemma in church, opposition

long term - positive:

global movement, alternative society

long term - negative:

internal fragmentation, less tolerance,  
more gated public realm





# Resistance and urban change

## Effects on the city and neighbourhoods





# Resistance and urban change

## Negative effects on city and neighbourhoods





# Resistance and urban change

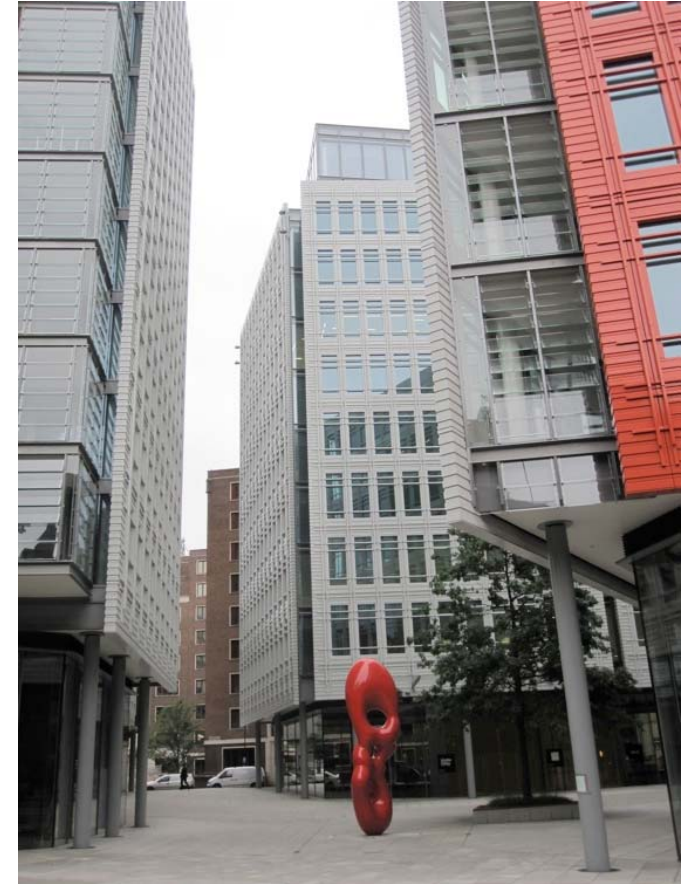
Positive effects on city and neighbourhoods





# Resistance and urban change

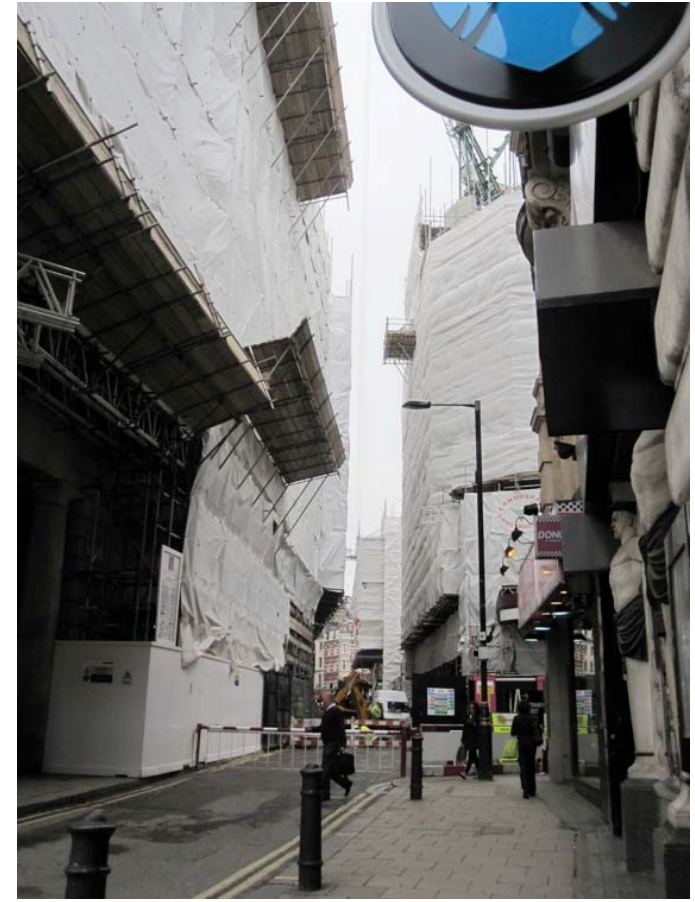
Meanwhile...





# Resistance and urban change

Meanwhile...





# Resistance and urban change

Yet...





# Resistance and urban change

Public realm reinstated..





# Resistance and urban change

Cohabitation?...





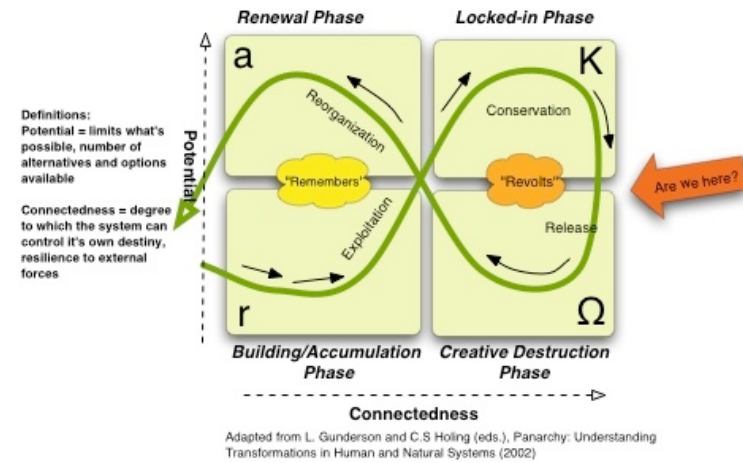
# Resistance and urban change

Cohabitation? Cooperation? Sustainable resilience...

URBAN RESILIENCE



Resilience and Adaptive Cycles in Human and Natural Systems  
- The Simplified Panarchy Model -





A photograph of a park at dusk. The sky is a deep blue with a few clouds and a bright moon. In the background, a Ferris wheel is illuminated with pink lights. The foreground shows the silhouettes of trees and people walking on a path.

# Thank you

Judith Ryser [www.urbanthinker.com](http://www.urbanthinker.com) jryser@dircon.co.uk